



# Funding and Convergence: Central and State schemes, UBA Support, CSR Support



# Outline

- Funding Possibilities
  - UBA funds
  - Institutional Support
  - Attracting Alumni
  - Society Participation
  - Stakeholder's Contribution
  - CSR funds and Special Projects
  - Government programs through District Authorities
    - Central Government schemes
    - State Government schemes
- Convergence
  - Institutions-PRIs-Voluntary Organizations-Government Agencies
  - Flagship programs of Central and State Governments



# UBA funds

- Funds for Awareness, survey, visits etc @Rs. 10000.00 per village
- Technology Development Rs. 1.0 lakh per technology
- Customization of solution Rs. 50000.00 per solution

## **Future Possibilities in Pipeline**

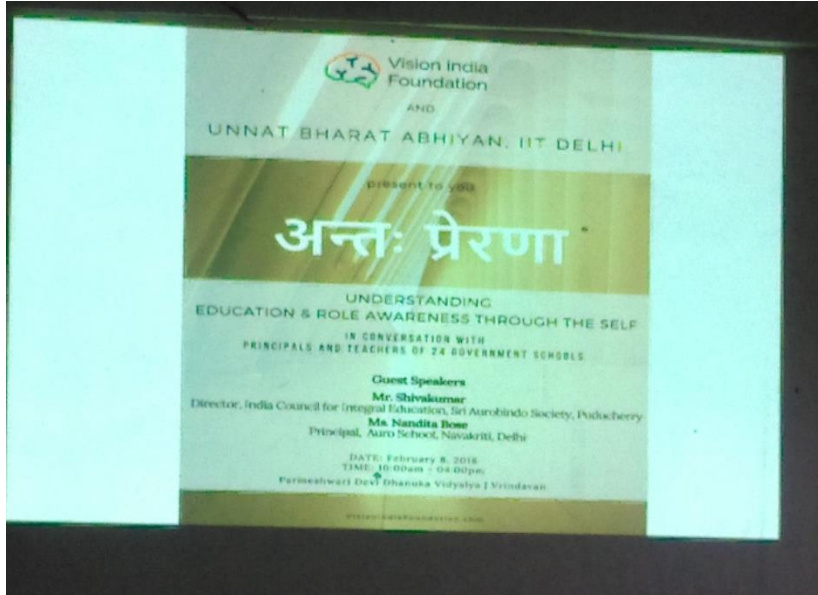
- Perennial Assistance funds for multiple developmental work Rs. 1.75 lakh to selected PIs
- Incentivizing Appreciation funds 10% of the generated funds



# Institutional Support

- Rural Internship program launched by Director IIT Delhi for students internship in Unnat Bharat Abhiyan Cluster and fellowship provided by IIT Delhi.
- Water treatment System by NIT Manipur

# Leverage UBA Funds



Teachers Training Program in Vrindavan Cluster



Biosand Filter Water Treatment Plant in NIT Manipur Cluster



PRA in Haridwar Cluster



Awareness camp in Village by IIT, BHU



Demonstration of Smokeless Chullah in Appasandra cluster



ANTARAM an Education Conference in IIT Delhi



# Alumni Support

- Emotional Connect with Alma Mater and it surrounding
- Help from Alumni Association
- Identification of Potential Alumni
- Adoption by Alumni
- Naming the activity



# Society Participation

- Identification of Reputed Industrialist/ Business Houses
- Identification of local Clubs/NGOs/ Social Workers
- Adoption of the activity



# Stake Holder's Contribution

- Immediate Implementation
- Ownership of the Project





# CSR Support & Special Projects

- Examples
  - ONGC CSR Funding support in Gandi Khata Cluster
  - IREDA CSR funding support for solar Street Lights in Khurrampur Cluster
  - NBCFDC CSR funding for Pottery Furnace in Khurrampur
- Grant in aid Projects
  - CVKI
  - MNRE
  - DST



# Government programs through District Authorities

## **Central and State Government Schemes:**

- Haryana
- Jammu & Kashmir
- Himachal Pradesh

# Haryana (1/3)

Type of Activity	Sub Activity	Scheme
Personal Development	Fostering healthy habits including daily exercise and games	Sports Meet for Women, Sports Equipment Scheme, Vyayamshala Panchayat and Block Level, Infrastructure Scheme for SC Villages, Rejuvenation of Youth Clubs, Sports Infrastructure in Schools, Rural Competitions and Sports Tournaments, Akhada Competitions, State Physical Fitness Programme, Chetna Sangh.
Human Development	Universal access to basic health facilities consisting of health card, medical examination	Gender Sensitisation Training Programme, Dr. Ambedkar Medical Aid Scheme, Mukhyamantri Muft Ilaj Yojana,
	Total Immunisation	Haryana State Health Resource Centre for Quality Improvement of Health Institution and MHIS-GIA
	100% Institutional Delivery	Aapki Beti Hamari Beti, Ladli
	Improving nutrition status for all, with special focus on children, adolescent girls, pregnant women, and lactating mothers	Improving Infant and Young Child Feeding Scheme,
	Universal access to education facilities up to class X and retention	Monthly Stipend Scheme for BPL and Backward Class Students, Education Loan Scheme for Female Students, Annusuchit Jati Chhattra Uchch Shiksha Protsahan Yojana, Dr. Ambedkar Medhavi Chhattar Sansodhit Yojana, Govt. Merit Scholarships in College for General University Education, Scholarship for Physically Handicapped, Government Institute for the Blind Girls/ Boys, Panipat, SCSP Scholarship Scheme, Merit cum Means Scheme (Scholarship for Minorities), Post-Matric Scholarship Scheme for Minorities, Financial Assistance for Higher Competitive Entrance Examinations to SC/BC Candidates Through Private Institutions, Indira Gandhi Priyadarshini Viwah Shagun Yojana.
Social Development	Activities for promotion of voluntarism like Bharat Nirman	Salokhan Mahila Samakh (SMS), Legal Literacy Mission, Mahila

# Haryana (2/3)

Economic Development	Promoting diversified agricultural and allied livelihoods, including livestock and horticulture	Intensive Fisheries Development Programme, Welfare of SC Families in Fisheries, Promotion of Sustainable Agriculture, Promotion of Cotton Cultivation, Promotion of Crop Diversification, Technology Mission on Sugarcane, National Project on Management of Soil Health and Fertility, Horticulture Promotion, Pisciculture.
	Rural industrialisation	Revolving Fund Scheme (Sanitary Napkin Scheme), Integrated Murrah Development Programme, Gausamvardhan - Conservation and Development of Indigenous Cattle, Livestock Units for SC Families,
	Skill Development of all eligible youth for self-employment and placement, also Providing Support to Rural People working in Large Cities	Swavalamban Scheme, Skill Development Training through SMSs, Individual Loaning Scheme through Banks, Tailoring Training to Scheduled Caste & Backward Classes Widows/ Destitute Women/ Girls, Upgradation of the Typing & Data Entry Skill of the SC/ BC Unemployed Youth Through Computer Training, Financial Assistance for Training to Scheduled Caste Candidates in Unorganised Sector Through Private Institutions, Vocational Guidance and Employment Counselling Programme,
Environmental Development	Tree Plantation in accordance with local preference in homestead, schools and public institutions	Forestry Activity in SC Villages, Social and Farm Forestry, Afforestation of Wasteland and Agroforestry, Haryana Community Forestry Project, Development of Agro-Forestry Clonal & Non-Clonal, Integrated Natural Resource Management and Poverty Reduction Project in Haryana (JICA Assisted Project),
	Watershed management especially renovation and revival of traditional water bodies; Improving access to Irrigation, etc. Drainages, Traditional drainages, flood protection, etc.	Development of Saline/Water-logged Soil, Integrated Watershed Development and Management Project, Soil Conservation on Watershed Basis,
	Rain Water Harvesting- roof top as well as others	Assistance on adoption of water saving technologies,
	Reducing local pollution of air, water and land	Sewerage Treatment Plant, Organisation of Seminars and Workshops for Environmental Awareness

# Haryana (3/3)

Basic Amenities and Services	Pucca houses for all houseless poor/poor living in kuccha houses ; Land Rights ; Land Records transparency	Housing Scheme for Scheduled Castes and Denotified Tribes, Mantri Anusuchit Jaati Nirmal Basti Yojana,
	Electricity connection to all households and street-lights including from alternative sources of energy, especially solar	Remote Village Electrification Programme, Jawaharlal Nehru National Solar Mission, Solar Photovoltaic Programme, Solar Thermal Programme, Bio-Energy/Gas Programme,
	Pucca infrastructure for public institutions- Anganwadis, schools, health institutions, Gram Panchayat Office and libraries	CM School Beautification Award Scheme,
	Civic infrastructure including community halls, buildings for SHG federations, playgrounds and burial grounds/ crematoria	Working Women Hostel, Loan from NABARD for the construction of Godowns.
Social Security	Pensions for all eligible families- old age, disability and widow	Old Age Samman Allowance Scheme, Widow Pension Scheme, Disability Pension Scheme, Allowance to Eunuchs and Dwarfs, Ladli Social Security Allowance Scheme, Financial Assistance to Kashmiri Migrants Families Scheme, Financial Assistance to Destitute Children Scheme FADC, Unemployment Allowance to Physically Handicapped Persons, Self-Help Councils, Identity Cards, Free of Cost Spectacles, 50% Free Travelling Facility,
	Insurance schemes like Aam Aadmi Bima Yojana	Rajiv Gandhi Parivar Bima Yojana, National Family Benefit Scheme,
Good Governance	Timely redressal of grievances filed by people, such that: 1. Grievances of all nature to be submitted to the Gram Panchayat / Charge Officer and dated receipt to be given 2. Grievances to be redressed within three weeks along with written reply 3. Institutionalisation of regular open platforms for airing of grievances and their redressal, coordinated by the Gram Panchayat	CM Grievance Redressal System, Harsamadhan Public Grievances Portal, State Consumer Helpline / PDS Helpline, NREGS Helpline, Kisan Passbooks,
	Half-yearly Social Audit of the programme implementation by the Gram Sabha facilitated by the Social Audit Units set up under MGNREGA	Sakashar Mahila Samooh (SMS)

# Jammu & Kashmir

Type of Activity	Sub Activity	Scheme
	Balancing the sex-ratio	Financial Grants for Girl Children Born After April 1, 2015
	Strong focus on the special needs of Persons With Disability (PWD), especially children and women	Prosthetic Aids to People with Disabilities, Pre-matric Scholarships to OBC, Physically Challenged People (PCP), Sweepers (safai karmacharis), Orphans/Destitute Children,
Personal Development	Universal access to education facilities up to class X and retention	Reimbursement of Examination Fees for BPL.
Human Development	Activities for promotion of voluntarism like Bharat Nirman Volunteers	Voluntary Service Allowance (VSA) - component of SKEWPY,
	Activities for violence and crime-free villages such as: a) Setting up Citizen Committees b) Sensitisation, especially of youth	Rehabilitation of Militancy Victims (RMV), National Foundation for Communal Harmony (NFCH) - Project Assist,
	Promoting diversified agricultural and allied livelihoods, including livestock and horticulture	Development of Horticulture in Dry Lands & Hilly Areas, Development of Special Rare & Minor Fruits Including Berries, Subsidy on Plant Protection Machinery, Development of Demonstration Plots, Private Paravet Scheme, Mini Sheep Farm Scheme, Development of Apiculture, Development of Mushroom Scheme,
	Rural industrialisation	Seed Capital Fund Scheme - Component of SKEWPY, Youth Start-up Loan Scheme, Distribution of Nylon Twine Threads to Fishermen, Cooperativisation of Craftsmen, Handicrafts MicroEnterprises Scheme (HMES), Artisans Credit Card, Jammu and Kashmir Self-Employment Scheme,
	Skill Development of all eligible youth for self-employment and placement also Providing Support to Rural People	Himayat, Udaan, Handicrafts Training, Handicrafts Training, Handlooms Training

# Himachal Pradesh

Type of Activity	Sub Activity	Scheme
Human Development	Universal access to education facilities up to class X and retention	Scholarship to Students Studying in 1st Class to PG Level Including Professional & Vocational Courses
Economic Development	Promoting diversified agricultural and allied livelihoods, including livestock and horticulture	Kisan Bagwaan Samridhi Yojana, Scheme for Soil Testing, Crop Diversification Project, Horticulture Development Project, Plants Protection Programme,
	Rural industrialisation	Rural industrialisation
	Skill Development of all eligible youth for self-employment and placement, also Providing Support to Rural People working in Large Cities	Training Programme for SCs/STs/OBCs, Scheme for Skill Development of PWDs, Skill Development Allowance, Self-Employment to Women,
	Village Tourism including eco-tourism	Financial Assistance to Encourage Tourism Activities in Offbeat Areas
	All activities should focus particularly on lifting households out of poverty, for which organising and federating women SHGs, providing employment to all workers, and bringing about financial inclusion are very important	Mahila Mandal Protsahan Yojana
Environmental Development	Activities for a clean and green village consisting of: a) Providing toilets in each household and in all public institutions and ensuring their proper use b) Appropriate solid and liquid waste management	Maharishi Valmiki Sampooran Swachhata Puruskar (MVSSP),
	Others (Renewable Energy)	Bio-gas
Basic Amenities and Services	Pucca houses for all houseless poor/poor living in kuccha houses; Land Rights; Land Records transparency	Rajiv Awaas Yojana, Repair Scheme for Repair of Houses of General Category BPLs,



# Solid Liquid Waste Management in Rural Area

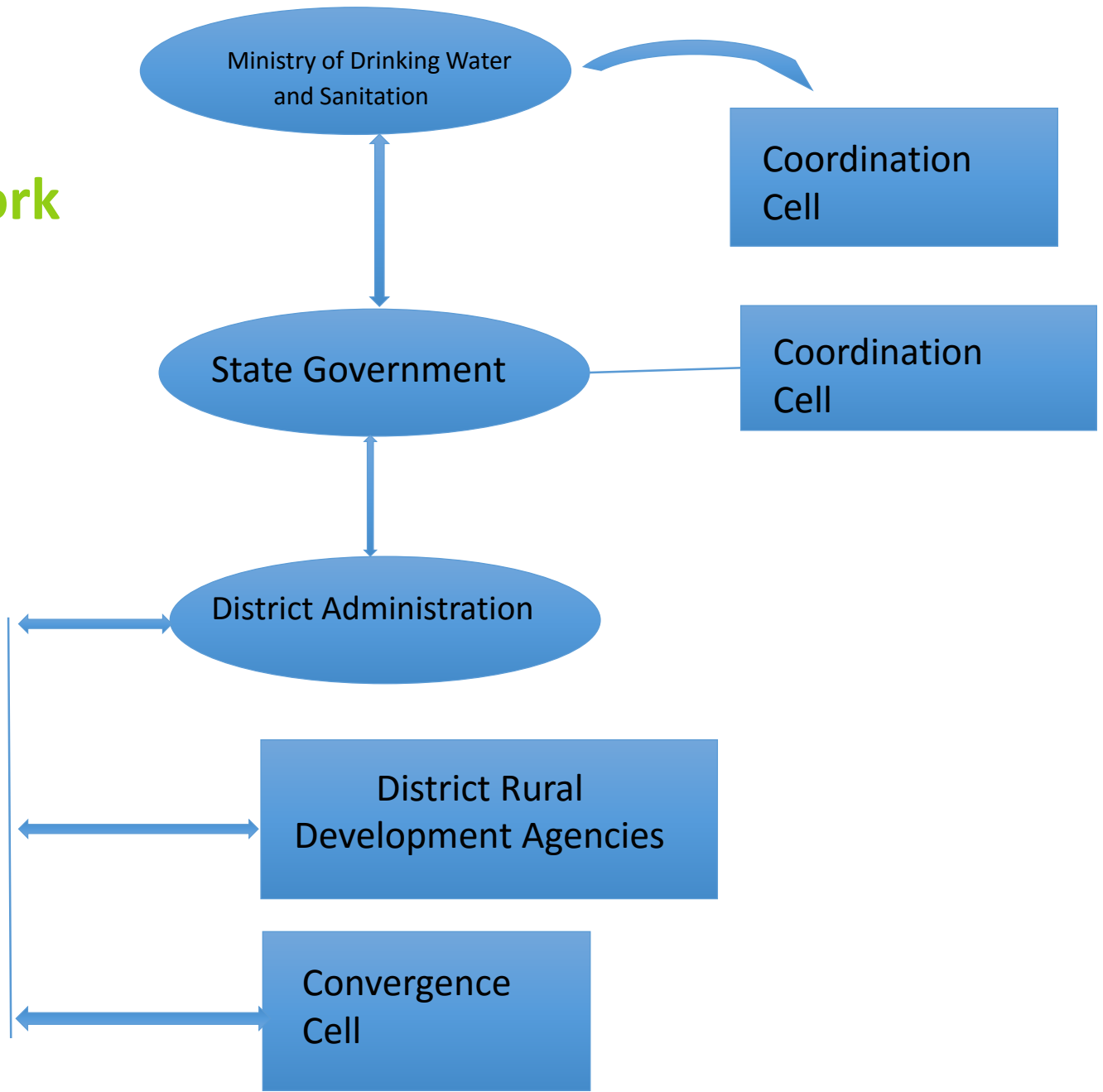
## Actors in rural SLWM

Level	Organisation
State	Public Health Engineering Department
	Water Supply and Sanitation Department
	Communication and Capacity Development Unit
	Panchayati Raj and Rural Development Department
	Tribal Development Department , State Pollution Control Board
District	Zila Panchayat , SBM (G) Cell, NGOs , Private sector
Block	Block Development Officer
	Panchayat Raj Public Works
	Block Resource Centre, NGOs , Private sector
GP	Gram Sevak/Sachiv, Panchayat Development Office
	Community based organisations
	SHGs, Private sector/entrepreneurs, Households





# Suggested Framework for Convergence & Coordination



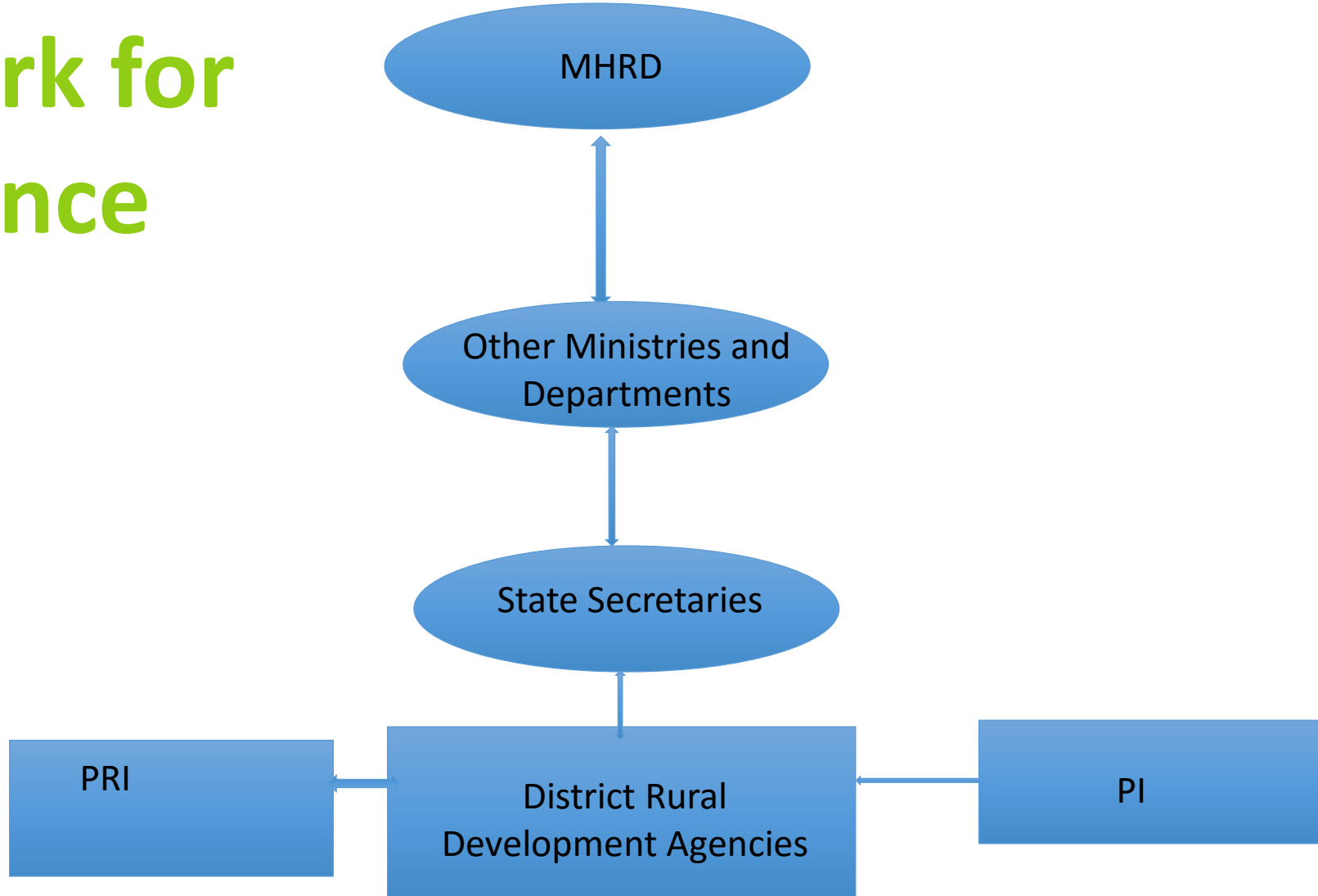
# Funds Available to GPs under Swachh Bharat Mission (SBM) (G)

Maximum Permissible Funds for SLWM (SBM)	Number of households in the GP
INR 7 lakh	< 150 households
INR 12 lakh	< 300 households
INR 15 lakh	< 500 households
INR 20 lakh	> 500 households



# Convergence

# Framework for Convergence



# Thank You



उन्नत भारत अभियान  
UNNAT BHARAT ABHIYAN